

# PRODUCT DATA SHEET

## HYDRONIC S3 ECONOMY D5E 12V CL



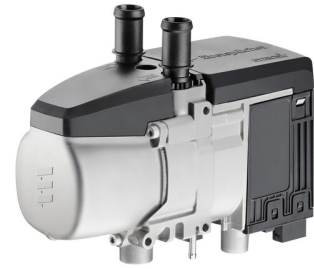
Third-generation fuel-powered water heater with 5 kW heating power. The heater is used to heat the interior of the vehicle (cab) and the engine and to de-ice the windows (defrost). The device can also be used in boats and motor homes to heat water needed for domestic purposes. Compact heater for tight installation spaces, as water pump and fuel metering pump are installed separately.

### ADVANTAGES:

- Encapsulated fan motor
- Separation of hot and cold components
- Electronically commutated motor
- Installation Straight and 90° water spigots (rotate 360°), in any combination
- New bracket concept
- New installation recommendations and installation kits
- All familiar types of fan activation from the Hydronic 1 and 2 are still applicable
- New CAN-based EasyFan fan and flap module
- Diagnostics by using EasyScan
- 85% efficiency
- Uses Eberspächer CAN and LIN bus technology
- Operating temperature range: diesel -40°C to +80°C and petrol -40°C to +60°C
- Stepless heating power control
- Optimised water volume flow thanks to controlled water pump allows for faster window de-icing

## HYDRONIC S3 ECONOMY D5E 12V CL

|              |              |
|--------------|--------------|
| Order number | 252912050000 |
| Voltage (v)  | 12           |
| Medium       | Water        |
| Fuel         | Diesel       |



## CONTROL STAGES

| Control stages                         | Start | Small    | Large    |
|--|-------|----------|----------|
| Electrical power consumption without   | 135 W | 5 W      | 32 W     |
| Power                                  |       | 1,300 W  | 5,000 W  |
| Fuel consumption                       |       | 0.15 l/h | 0.59 l/h |
| Electrical consumption with water pump |       |          | 50 W     |

## ATTRIBUTES

|  |                    |
|--|--------------------|
| Dimensions (l/w/h)                       | mm x mm x mm       |
| Medium                                   | Water              |
| Protection Class IP                      | IP5K6K, IP5K9K     |
| Allowed ambient temperature in operation | -40 / +80 °C       |
| Operation suitable to x altitude         | 1500 m             |
| Upper voltage limit                      | 16 V               |
| Lower voltage limit                      | 10.5 V             |
| Operating mode                           | Heating, Ventilate |
| Alternative fuel                         | FAME               |
| Allowed pressure during operation        | 2.5 bar            |
| Minimum water flow rate                  | 300 l/h            |
| Delivery rate water pump                 | 600 l/h            |